



Comparison of supervised classification methods of Maximum Likelihood, Minimum Distance, Parallelepiped and Neural Network in images of Unmanned Air Vehicle (UAV) in Viçosa - MG

Comparação dos métodos de classificação supervisionada de imagem Máxima Verossimilhança, Distância Mínima, Paralelepípedo e Redes Neurais em imagens de Veículo Aéreo não Tripulado (VANT), na região de Viçosa-MG

Daniel Camilo de Oliveira Duarte¹

Juliette Zanetti²

Joel Gripp Junior³

Nilcilene das Graças Medeiros⁴

Recebido em maio de 2017.
Aprovado em julho de 2017.

ABSTRACT

The aim of this work was testing the classification techniques in digital aerial images of spatial high resolution obtained by Unmanned Air Vehicle (UAV). The images recover an area of the Federal University of Viçosa, campus Viçosa in the municipality of Minas Gerais, Brazil. From the orthophoto generated, the classification test was made, by using four classifiers: Maximum Likelihood, Minimum Distance, Parallelepiped and Neural Network. The classification that best delimited the different features present in the image was the classification by Artificial Neural Networks. In order to prove statistically the classification efficiency, the validation was carried out through Kappa index and visual analysis.

KEYWORDS: Images Classification. Maximum Likelihood. Minimum Distance. Parallelepiped. Neural Network. UAV.

¹Universidade Federal de Viçosa (UFV). Departamento de Engenharia Civil. Programa de Pós-graduação em Engenharia Civil, Brasil. E-mail: daniel.duarte@ufv.br

²Universidade Federal de Viçosa (UFV). Departamento de Engenharia Civil. Programa de Pós-graduação em Engenharia Civil, Brasil. E-mail: juliette.zanetti@ufv.br

³Universidade Federal de Viçosa (UFV). Departamento de Engenharia Civil. Programa de Pós-graduação em Engenharia Civil, Brasil. E-mail: jgripp@ufv.br

⁴Universidade Federal de Viçosa (UFV). Departamento de Engenharia Civil. Programa de Pós-graduação em Engenharia Civil, Brasil. E-mail: nilcilene.medeiros@ufv.br

RESUMO

O objetivo do trabalho foi testar técnicas de classificação em imagens aéreas digitais de alta resolução espacial obtidas por Veículo Aéreo Não Tripulado (VANT). As imagens recobrem uma área da Universidade Federal de Viçosa, campus Viçosa no município de Minas Gerais, Brasil. A partir da ortofoto gerada foram realizados os testes de classificação, utilizando quatro classificadores: Máxima Verossimilhança, Distância Mínima, Paralelepípedo e Redes Neurais Artificiais. A classificação que melhor delimitou as diferentes feições presentes na imagem foi à classificação por Redes Neurais Artificiais. Para comprovar estatisticamente a eficiência da classificação a validação foi realizada por meio do índice Kappa e análise visual.

PALAVRAS-CHAVE: Classificação das imagens. Máxima Verossimilhança. Mínima Distância Média. Paralelepípedo, Rede Neurais. UAV.

* * *

Introduction

Nowadays, there are many methods for digital images treatment of remote sensing which allow to carry out tasks of manipulation, analysis and images comprehension. In the images processing of remote sensing, the target nature is determined based on the fact that different materials are characterized by interacting in different ways in each band of electromagnetic spectrum (JENSEN, 2009).

The use of Air Vehicles Unmanned (AVUs) is the study field that has grown fast in the technologies of remote sensing, by offering an option of low cost that allows to measure and monitor aspects of the environment with the possibility of the images acquisition (HONKAVAARA, et al., 2013). Air images with spatial and time high resolution contribute for obtainment of field information, characterization of the problem and even thematic maps generation of elevated detail. Lian e Chen (2011) worked with guided classification to object in satellite images of spatial high resolution and concluded that the precision of classification is directly related to spatial resolution.

According to Queiroz et al. (2004), the information contained in the images can be extracted through the classification process. There are various

classification methods which search through sundry approaches identify with accuracy the information that each image pixel, by classifying it in category. The methods of image classification can present different levels of accuracy, depending on the approach used by the method and the specification of its parameters.

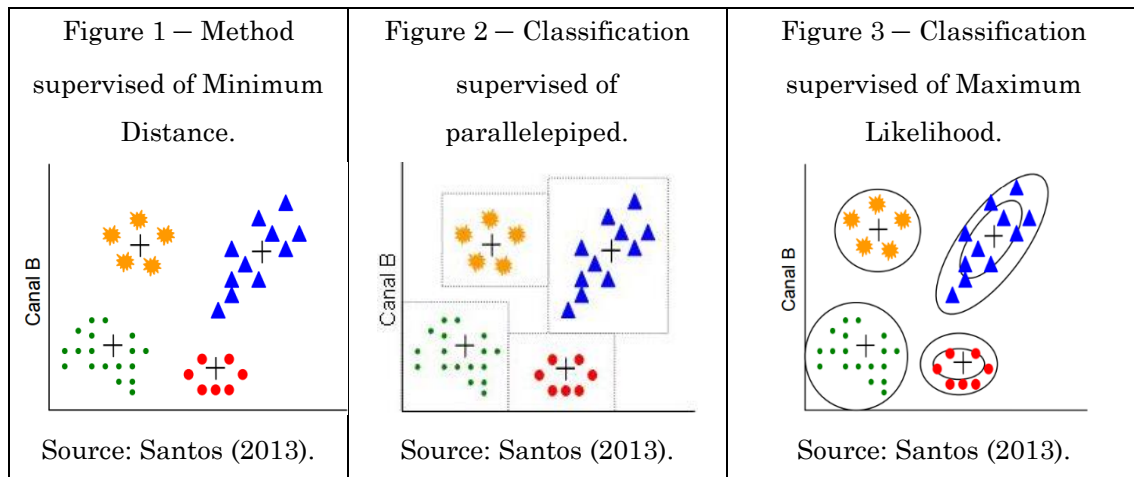
Thereby, the aim of this study was evaluating and comparing the performance of four classifiers: Parallelepiped (PPD), Minimum Distance Average (MDA), Maximum Likelihood (ML) and Artificial Neural Network (ANN) to determine the use and cover map with the classes: Forest, Water, Urbanization, Agriculture, Exposed Soil, in UAV images, in Viçosa, in order to verify which method offers best results through the validation by the Kappa Index.

2 Images classification

Classification methods can be divided into classifiers per pixel or region and can take into account one or more image bands. The classifiers per pixels use the spectral of each pixel isolated to find homogenous regions, defined as classes. Classifiers per regions are based on information of a group of neighboring pixels (CROSTA, 1992). In accordance with Santos (2003), the method of ADM assigns each unknown pixel to class whose average is next to it. Each pixel inside and out of the areas of training is evaluated and marked to class which it is more likely to belong to Figure 1. The method PPD defines square areas, by using units of standard deviation or minimum and maximum reflectance values into each training area, according to Figure 2.

However, the MAXVER method, according to Queiroz et al. (2004) is the most used in remote sensing within the statistical approach. This method suits ellipses, so that the location, shape and ellipse size reflect the average variance and covariance of two variables. The distribution of reflectance values is described by a probability function that evaluates the possibility of

a given pixel belongs to a category and classifies the pixel to a category which it is more likely to associate, (SANTOS, 2013) as shown in the Figure 3.



The RNA (Artificial Neural Networks) networks are also used in images processing. In Queiroz et al.'s (2004) opinion, as RNA are algorithms whose operation is based on structure of the human brain because it acquires and keeps knowledge through the learning process, which happens through neurons connections, what is also known as synapses. According to Abdalla and Sá Volotão (2013), there are neural networks of simple layer which consist of a group of neurons arranged in a single layer only and multilayer networks, formed by numerous hidden layers or the combination of several networks of simple layers.

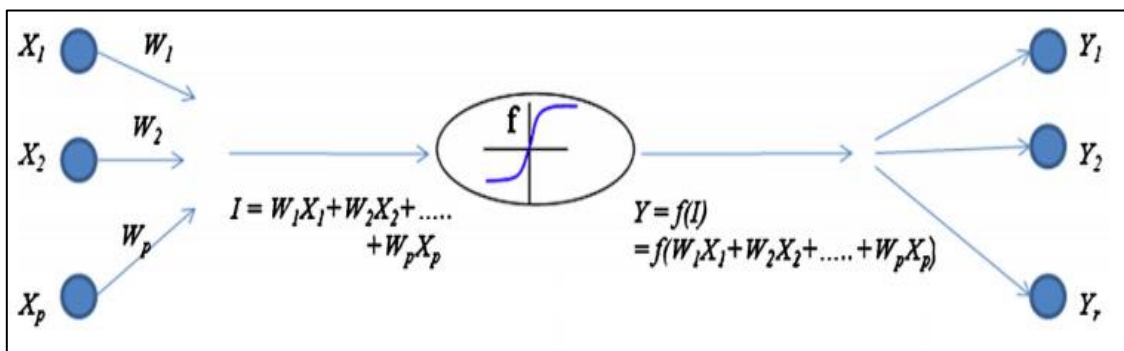
To Mazhar et al (2013), in a neural network the input layer X_i is one in which patterns are presented to the network. The intermediate layers (also called occult or hidden) which can be more than one, are responsible for most of the processing. At this stage the input data is multiplied by the weight W_{ji} and it is also added polarization θ_j to adjust the residual error. An activation or transference function f calculates output Y_j of the neuron, by using a predefined logic. The output of the transfer function goes to other neurons or environment through the output layer. The operation of a typical neuron in a

network is shown in Figure 4, can be written mathematically by Equation 1 and 2:

$$I_j = W_{ji}X_i + \theta_j \quad (1)$$

$$Y_i = f(I_j) = f(W_{ji}X_i + \theta_j) \quad (2)$$

Figure 4 – Architecture of a RNA.



Source: Mazhar et al (2013).

The neurons number of the first layer corresponds to the dimensionality of input attributes vector. The output layer will have as many neurons as there are classes to be separated. The biggest problem is in the definition of hidden layers number, and the neurons number that composes them. In practical this problem has been generally solved by attempt and error, or by previous experience in domain of a given situation (GALO, 2000).

3 Classification Rating

The classification rating can be determined by the Kappa index method, calculated based on an error matrix and by using as measuring of agreement between the map and the reference adopted for the estimative of the accuracy, in this case, the orthophoto. The Equation 3 calculates the Kappa coefficient (COHEN, 1960):

$$K = \frac{N \sum X_{ii} - \sum (X_{i+} \times X_{+i})}{N^2 - \sum (X_{i+} \times X_{+i})} \quad (3)$$

Considering that:

K = Kappa coefficient of agreement;

N = Number of observations (sample points);

X_{ii} = Observation in the line i and column i;

X_(i+) = Total marginal of the line i;

X_(+i) = Total marginal of the column i.

4 Methods

The study area is part of the Federal University of Viçosa (UFV), Viçosa campus, Minas Gerais. The UFV landscape has classes variety of use and soil occupation such as: forest remnants; experimental fields of agriculture and bare soil; buildings and patio area with different characteristics; water bodies such as rivers and lakes, among others. Due to these characteristics classes of forest, agriculture, bare soil, urbanization and water were chosen for the experiment.

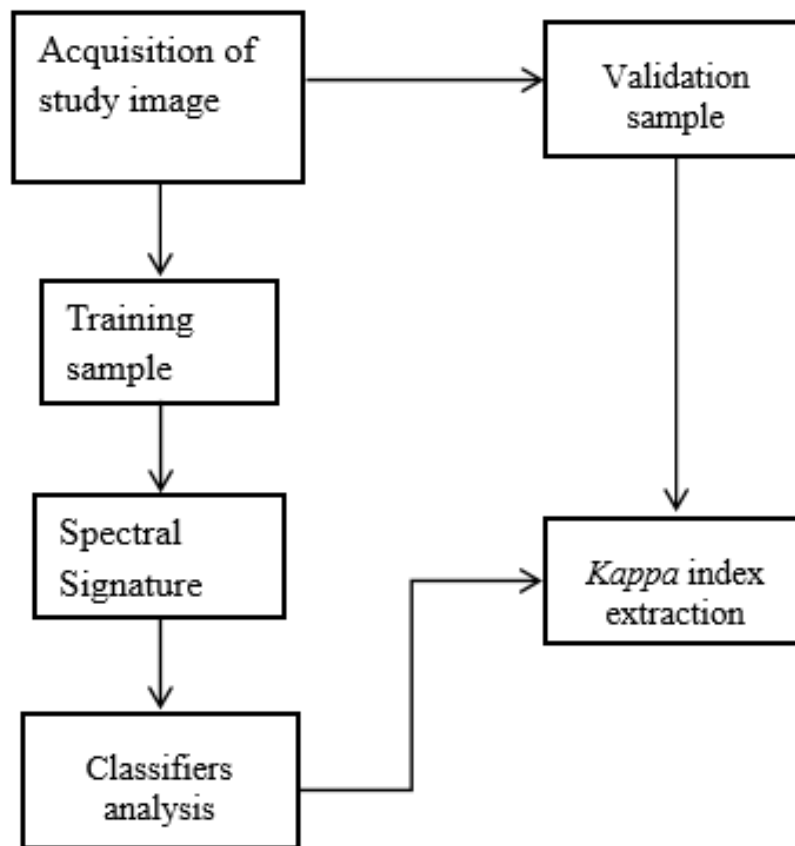
In this study the equipment UAV Echar 20A manufactured by XMobots (2015) was used, coupled with Sony ILCE camera - 7R, 36.4 MP full-frame CMOS sensor Exmor®. The photos processing was carried out in PhotoScan Professional Edition 1.0.2 of Agisoft software. Points Control and validation were collected by using the Global Navigation Satellite System (GNSS), Javad TRIUMPH 1 receptor with application of the method Real Time Kinematic (RTK) for georeferencing to the Brazilian Geodetic System.

It also used the Geographic Information System (GIS) IDRISI version 17 - Jungle, developed by Clark University. The software was chosen because of various processing tools and analysis of digital images.

5 Methodology

In order to facilitate the methodology comprehension applied, a flow diagram of the activities performed is presented in the Figure 5.

Figure 5 – Flow diagram of the methodology proposed.



Source: Prepared by the author (s).

The UAV images were obtained on 10/08/2015 at 11:41. Possessing the UAV and control points, it was generated orthophoto with spatial resolution of 5 cm. In order to minimize the computational effort of the classifiers, the orthophoto was cut within the limits of the study area.

Then the class samples of Forest, Water, Urbanization, Agriculture and Exposed Soil were collected, divided into two groups: training and validation. On average, there were 61,995 training pixels and 12,810 validation pixels for each class. It is important to highlight that the sample

size of each class was a control factor in the experiment enabling that the classifiers analysis were independent of the sample size of each class.

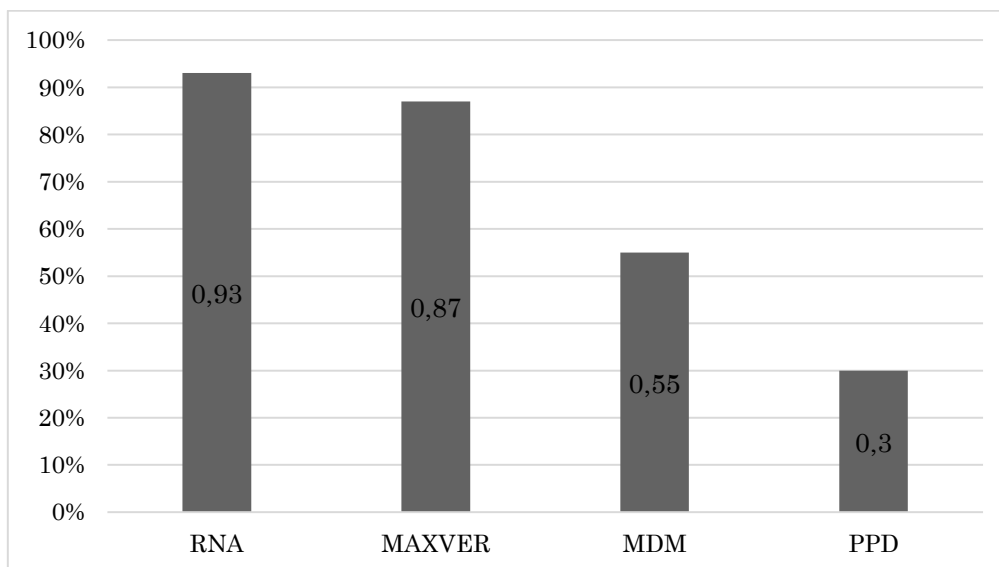
The spectral signatures of classes were extracted with the training samples and then the classifiers analysis PPD, MDM, MAXVER and RNA were performed. Possessing the four maps generated by using classifiers along with the validation sample it was extracted Kappa index of each classifier tested thus to carry out the analysis.

Qualitative analysis was also conducted, based on the visual analysis, where the results of the classified images with the original image were compared, aiming to verify if the identification of classes was consistent with reality.

6 Results

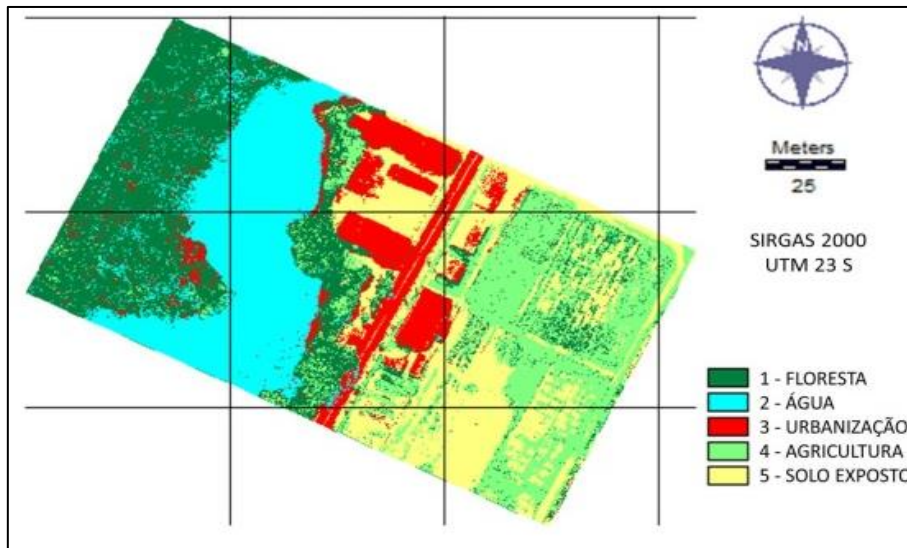
It was observed that among the four classifiers rated, RNA and MAXVER demonstrated the best performance, with Kappa index of 93% and 87%, respectively, according to the Figure 6. The Figures 7, 8, 9, 10 illustrate the classifiers maps used.

Figure 6 – Kappa index graph of the classifiers tested.



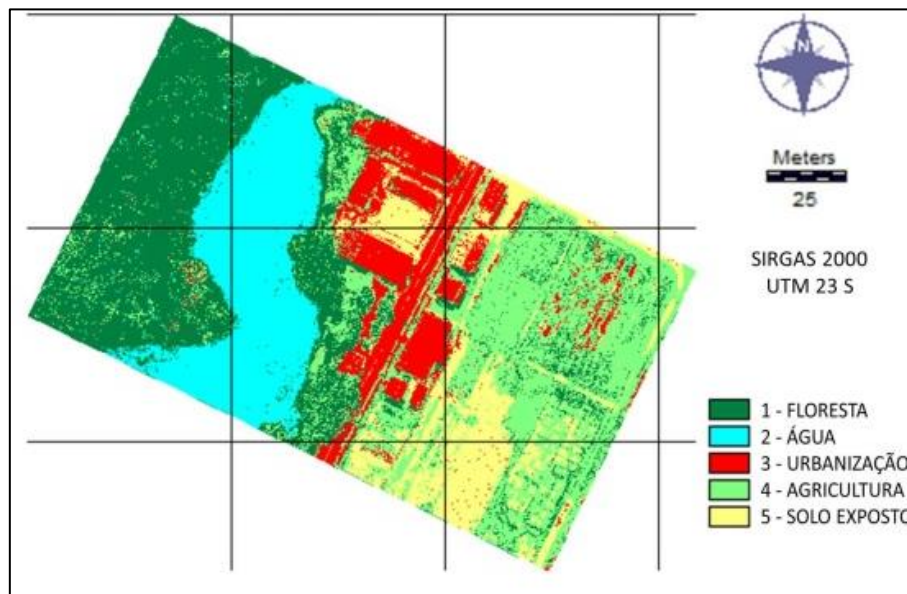
Source: Prepared by the author (s).

Figure 7 – Map with best classification of RNA.



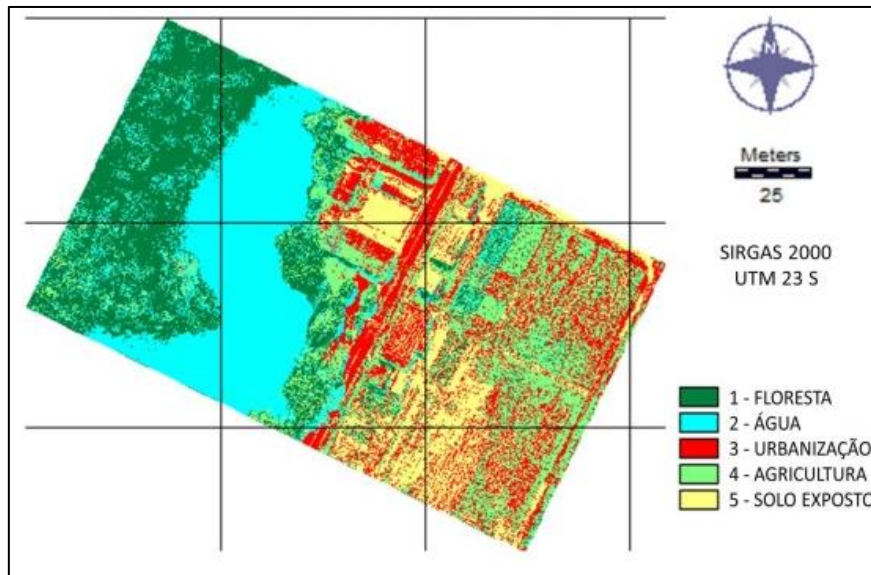
Source: Prepared by the author (s).

Figure 8 – Map with best classification of Maximum Likelihood.



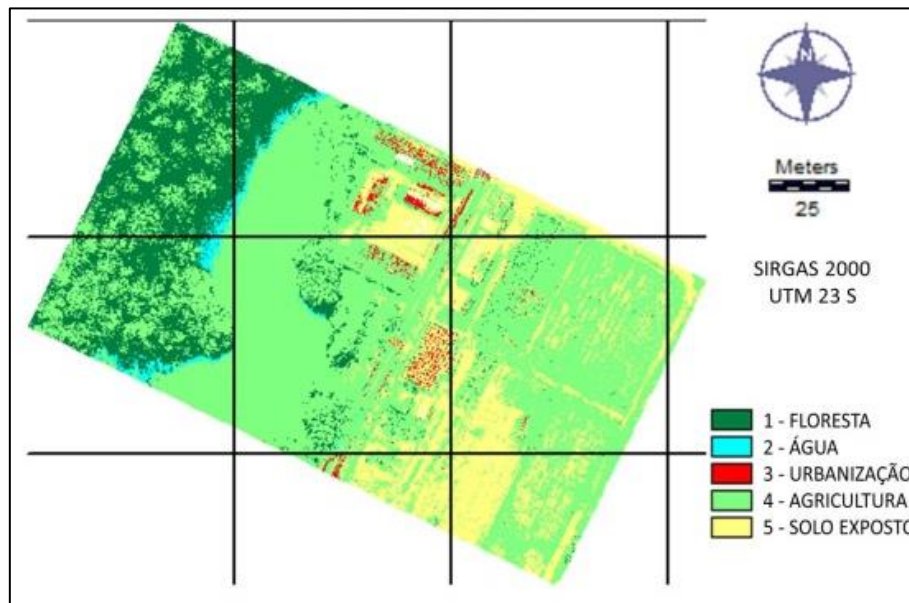
Source: Prepared by the author (s).

Figure 9 – Map with best classification of Minimum Distance to the Average.



Source: Prepared by the author (s).

Figure 10 – Map with best classification of parallelepiped.



Source: Prepared by the author (s).

It can be observed that the parallelepiped method had the worst result (Figure 10), since it is more appropriate for images that have classes with well-defined shapes, different from the image used, obtained by UAV, which has a low definition of class boundaries.

In accordance with Crósta (1992) one of the problems is that an image that contains thousands of pixels most likely fell out of the decision limits of classes, no matter classes to define. Nevertheless, the method result of the minimum distance is due to the fact that interest classes were worked in the image that was better suited to the method algorithm, with good spectral similarity, which facilitated the classification.

Evaluating visually the images generated by the classifiers, it is observed that the method of neural networks and maximum likelihood were more compatible with reality, by distinguishing better the targets. To obtain the image classified as RNA, the parameters were changed, and by trial and error, an acceptable result was obtained.

The settings used for test in an attempt to obtain the network that best classifies the image are shown in Table 1.

Table 1 – Setting used for the tests performance.

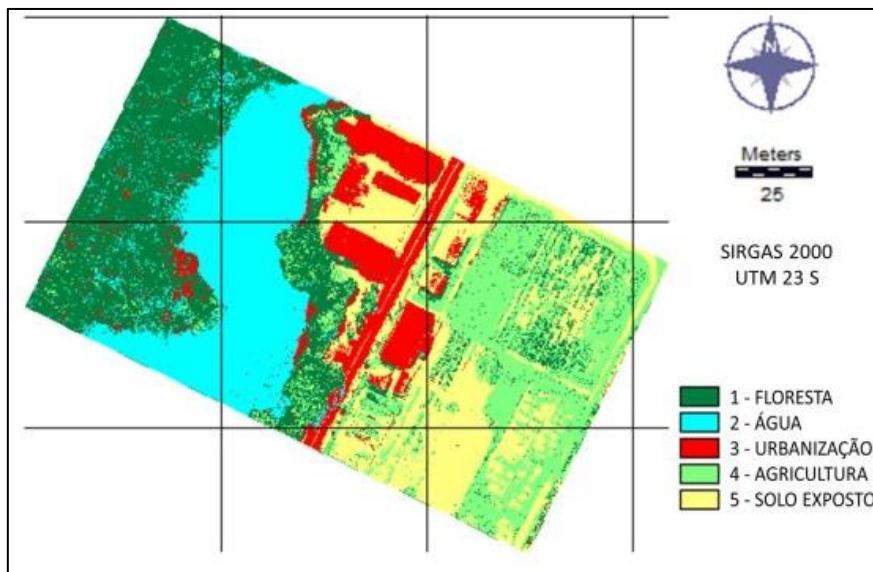
Hidden Layers	Nodes 1	Nodes 2	RMS training	RMS testing	KAPPA
1	10	0	0,2	0,2	89%
1	12	0	0,3	0,3	66%
1	14	0	0,2	0,2	91%
2	10	6	0,1	0,1	93%
2	12	8	0,1	0,1	93%
2	14	10	0,1	0,1	93%

Source: Prepared by the author (s).

In accord with Table 1, it is stated that with a layer and increasing the knots number, the Kappa has random behavior. The neural network had best performance with two layers and independent when the second layer is inserted.

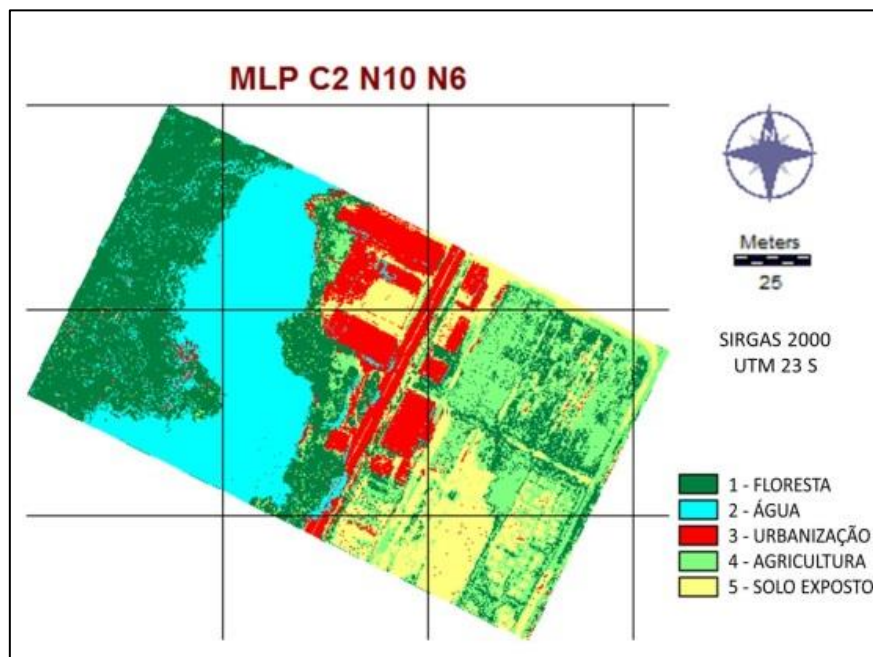
In the tested carried out, it was observed that, increasing the number of second layer, the network did not product significant results in the image and its Kappa index stayed constant. Figures 11, 12, 13, 14, 15, 16 illustrates the maps obtained by Artificial Neural Network method.

Figure 11 – Classification maps by Artificial Neural Networks of parameters C1 N10 N0.



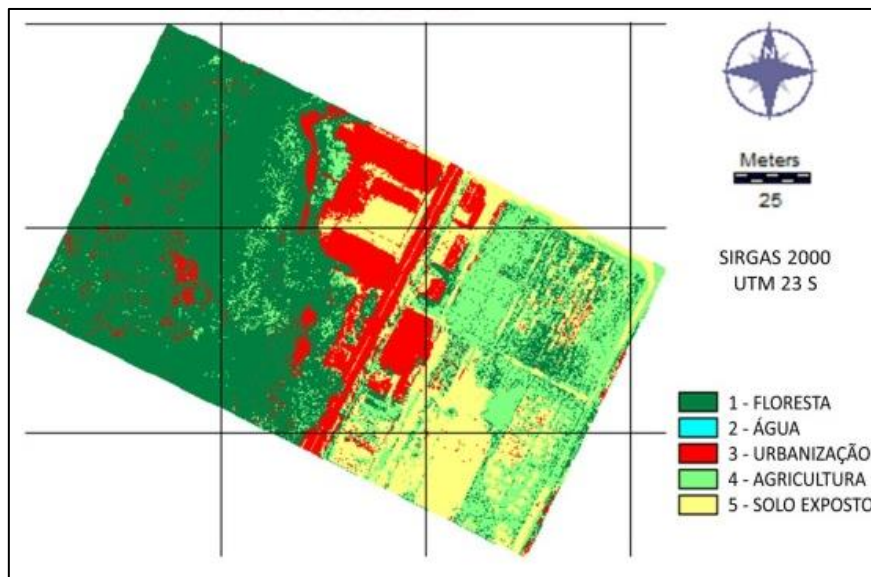
Source: Prepared by the author (s).

Figure 12 – Classification maps by Artificial Neural Networks of parameters C2 N10 N6.



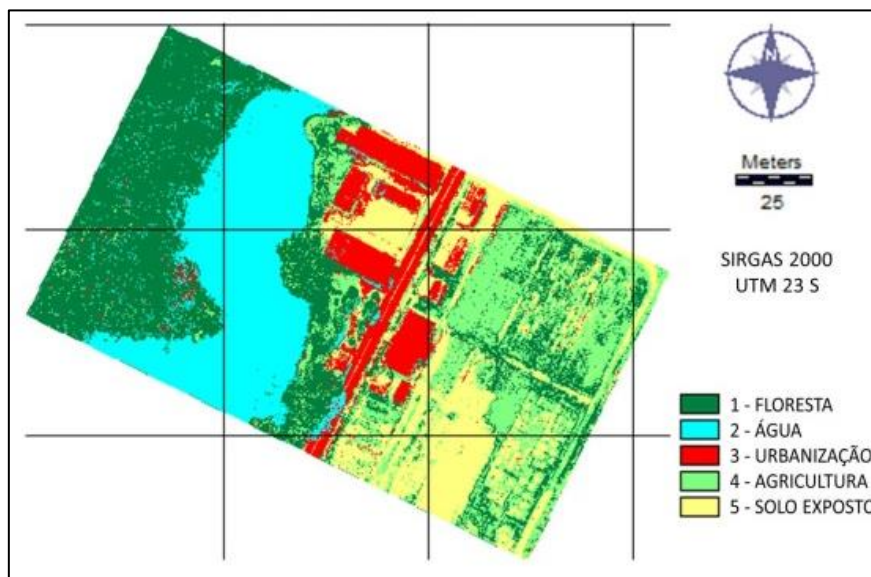
Source: Prepared by the author (s).

Figure 13 – Classification maps by Artificial Neural Networks of parameters C1 N12 N0.



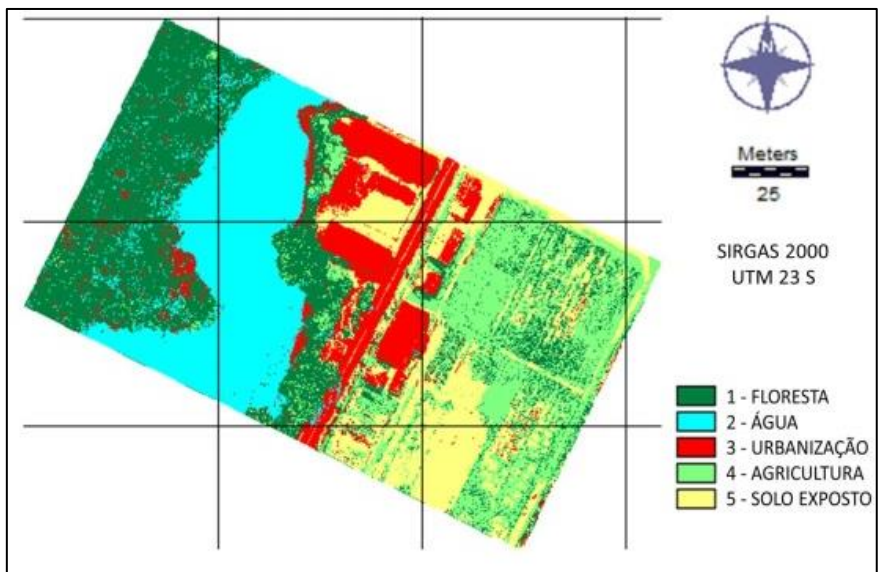
Source: Prepared by the author (s).

Figure 14 – Classification maps by Artificial Neural Networks of parameters C2 N12 N8.



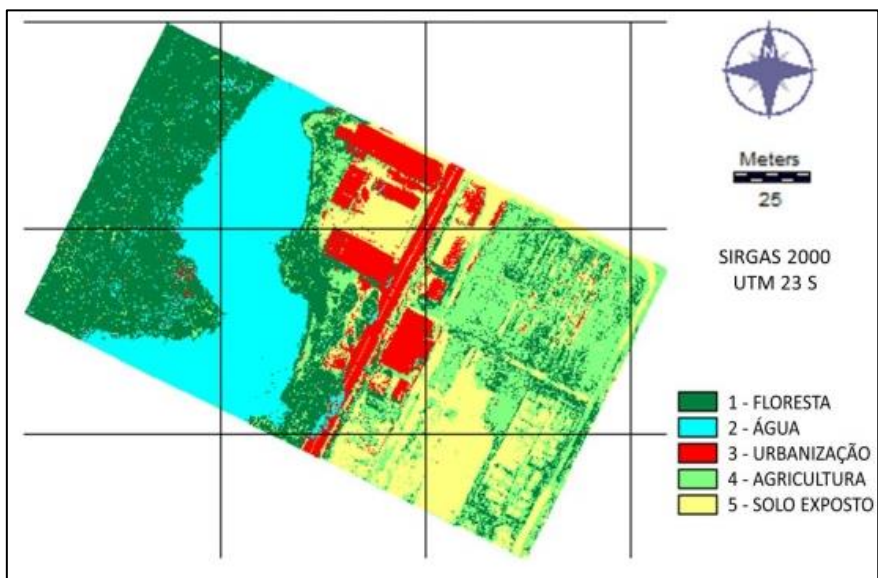
Source: Prepared by the author (s).

Figure 15 – Classification maps by Artificial Neural Networks of parameters C1 N14 N0.



Source: Prepared by the author (s).

Figure 16 – Classification maps by Artificial Neural Networks of parameters C2 N14 N10.



Source: Prepared by the author (s).

7 Conclusion

Higher spatial resolution images can improve the classification, due to better identification of objects on the soil. Thus, after the work accomplishment, it was found that the use of UAV images was efficient to

define targets of interest, avoiding the scan, based on photo-interpretation. It is also to note that these analyses can be made extremely quickly and dynamically, by enabling the monitoring of physical, environmental and urban social evolution, for example.

The choice of the best results in this work was based on the results of the Kappa index and visual analysis of the results generated thereby it was concluded that the use of the classification method by neural networks was more efficient than other tested methods, however the definition of the parameters and their training were long, requiring tests with modified parameters, in order to reach an acceptable result. In this context, the data generated by this research, can bring an effective contribution, once they can be considered as an alternative to systematization in the detection of classes in the image, not limited to traditional techniques.

References

- ABDALLA, L. S.; SÁ VOLOTÃO, C.F. Estudo da configuração de diferentes arquiteturas de redes neurais artificiais MLP para classificação de imagens ópticas, **Anais XVI Simpósio Brasileiro de Sensoriamento Remoto - SBSR**, Foz do Iguaçu, PR, Brasil, 2013. pp. 8200-8207.
- CROSTA, A. P. **Processamento digital de imagens de sensoriamento remoto**. Campinas: IG/UNICAMP. 1992. 170p.
- COHEN, J.A. Coefficient of agreement for nominal scales. **Educational and Psychological Measurement**, 20, 1960. pp. 37-46.
- GALO, M. L. B. T., **Aplicação de redes Neurais Artificiais e Sensoriamento Remoto na Caracterização Ambiental do Parque Estadual Morro do Diabo**. Tese de Doutorado, Escola de Engenharia de São Carlos da Universidade de São Paulo, São Carlos, SP, 2000.
- HONKAVAARA, E.; SAARI H.; KAIVOSOJA, J.; POLONEN, I; HAKALA T.; LITKEY, P; MAKYNEN J.; PESONEN L. **Processing and assessment of Spectrometric, Stereoscopic Imagery Collected Using a Lightweight**

- UAV Spectral Camera for Precision Agriculture. Remote Sensing**, 5, 2013. pp. 5006-5039.
- JENSEN, J. R. **Sensoriamento remoto do ambiente: uma perspectiva em recursos terrestres**. São José dos Campos: Parêntese, 2009. pp. 4-29.
- LIPPMANN, R. P., An introduction to computing with neural nets. **IEEE ASSP Magazine**, v.4., 1987.
- Lian, L. & Chen, J. Research on segmentation scale of multi-resources remote sensing data based on object-oriented. **Procedia Earth and Planetary Science**, vol. 2, n. 1, 2011, pp. 352-357.
- MA, Z.; REDMOND, R.L. Tau coefficients for accuracy assessment of classification of remote sensing data. **Photogrammetric Engineering and Remote Sensing**, Reston, v.61, n.4, 1995. pp.63-152.
- MANGABEIRA, J.A.C.; AZEVEDO, E.C. & LAMPARELLI, R.A.C. **Avaliação do levantamento de uso das terras por imagens de satélite de alta e média resolução espacial**. Campinas: Embrapa. Comunicado técnico, 11. 2003. pp. 1-15.
- MOREIRA, M. A. **Fundamentos do sensoriamento remoto e metodologias de aplicação**. Ed. UFV. 2ª ed. Viçosa, MG, 2003.
- SANTOS, R. D. B. **Dinâmica espaço-temporal (1990 - 2010) do uso da terra no município de Seropédica, RJ, determinado por classificação automatizada**. Trabalho de conclusão de curso de Engenharia florestal - Universidade Federal Rural do Rio de Janeiro (UFRRJ). 2013.
- RIBEIRO R. J. C., et al. **Comparação dos métodos de classificação supervisionada de imagem Máxima Verossimilhança e Redes Neurais em ambiente urbano**. 2007.
- QUEIROZ, R. B.; RODRIGUES, A. G.; GÓMEZ, A. T. **Estudo comparativo entre as técnicas máxima verossimilhança gaussiana e redes neurais na classificação de imagens IR-MSS CBERS 1, WORKCOMP**, 2004.